



COSTAN 

«Best in Class» Cabinets

Product Overview


Epta

Best in class for energy, for all types of store

A
↑
G

A



BACK TO SUMMARY

COSTAN



Best in Class Cabinets



This information is confidential and was prepared by Epta solely for our internal use. It is not to be relied on by any third party without Epta prior written consent. Marketing 09/2020

Best in class for energy, for all types of store



BACK TO SUMMARY

COSTAN



Best in Class Cabinets



This information is confidential and was prepared by Epta solely for our internal use. It is not to be relied on by any third party without Epta prior written consent. Marketing 09/2020



Overview

Ecodesign and energy labelling regulations

- Came into force in 2021 in Europe
- It foresees that the **best Energy Classes are empty** in an initial phase
- **Class C** represents the best of the market.



BACK TO SUMMARY



This information is confidential and was prepared by Epta solely for our internal use. It is not to be relied on by any third party without Epta prior written consent. Marketing 09/2020

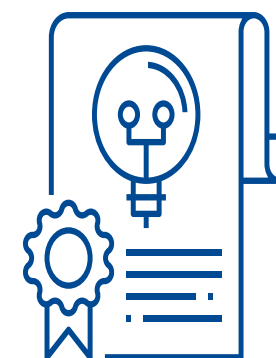
Best in Class Cabinets



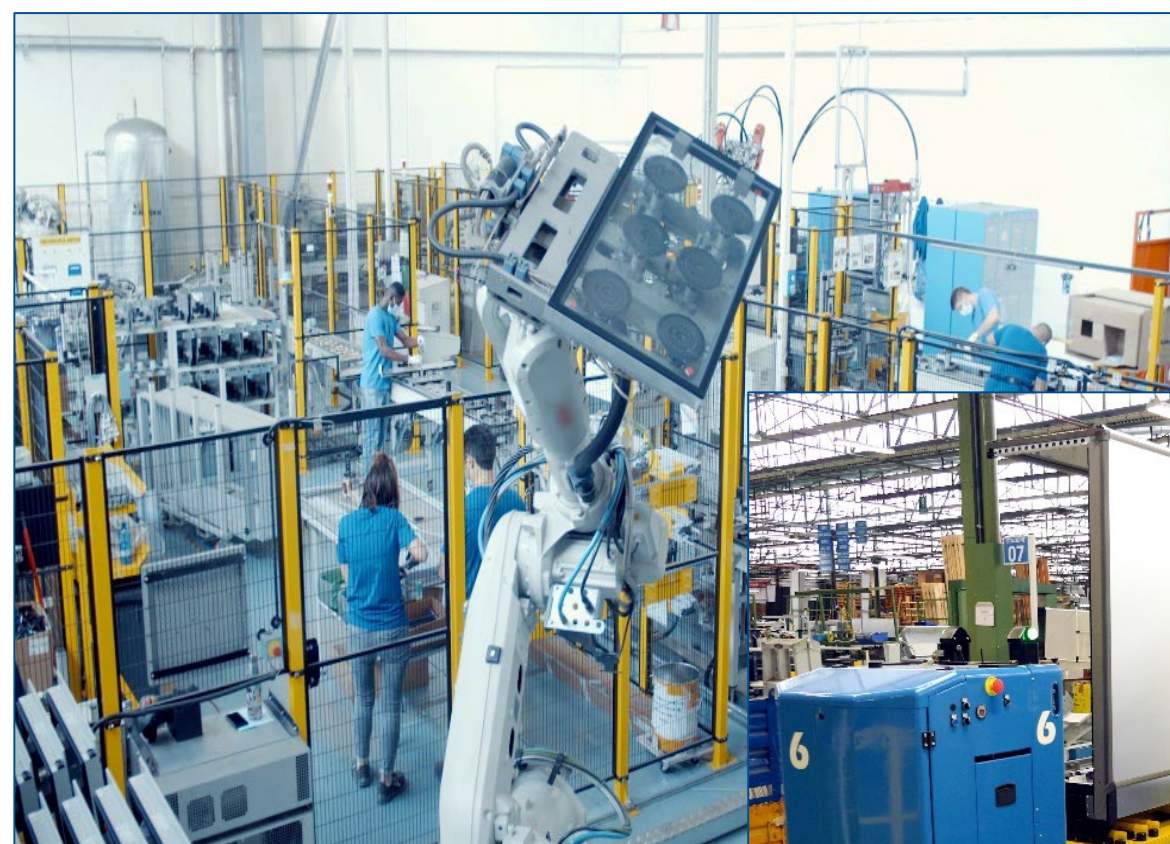
Our commitment to innovation



€ 54 million
Our investments
in innovation and
technology
from 2019 to 2021



**about 140
registered
patents
and designs**



~270

Employees in the
Group
dedicated to R&D

10

R&D Centres

1

Innovation
Centre



**Best in
Class
Cabinets**



BACK TO SUMMARY

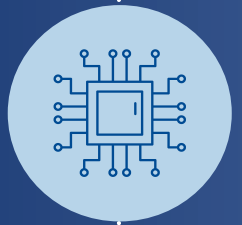
COSTAN



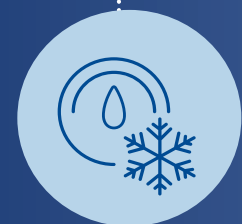
- **THERMODYNAMICS:** Optimized fluid dynamics thanks to the use of CFD software, to generate the best airflow inside the cabinet. Evaporators with a specific design and shape, to maximize efficiency and serviceability



- **MATERIALS:** Innovative insulation materials, OUR advanced glass technology and sealing solutions to create high performing doors with the best insulation values



- **ELECTRONICS:** digital components which enable adaptative control and feedback



- **SELF CONTAINED UNIT** for plug-ins and integrals: we combine the latest technologies in refrigeration components to achieve the best performance



This information is confidential and was prepared by Epta solely for our internal use. It is not to be relied on by any third party without Epta prior written consent. Marketing 09/2020

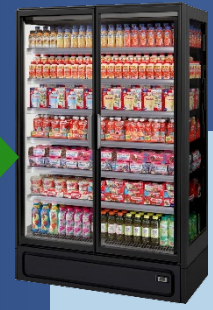
Best in Class Cabinets





A ↑
G

A



Tango Ultra

Class A, with 40% energy saving*

A ↑
G

B



Valzer Ultra

Class B, with 40% energy saving*

A ↑
G

B



GranVista Ultra (remote & integral)

Class B, with 26% energy saving

A ↑
G

B



GranBering Integral Ultra

Class B, with 35% energy saving*

*compared to previous model

This information is confidential and was prepared by Epta solely for our internal use. It is not to be relied on by any third party without Epta prior written consent. Marketing 09/2020



Best in Class Cabinets



FRESH AND PROXY

Best in class for energy class

- **CLASS A** specific configuration: -40% energy saving vs B class
- Value doors, Value LEDs, panoramic ends and variable speed compressor, L=1250

Increased storage volume

- More than +10% internal volume increase due to evaporator repositioning, full base deck and deeper shelves +50mm

Range Flexibility and Modularity, Merchandising over the SlimFit family for Proxy stores.

- Comprising Compact / Narrow models
- Including 2D length
- Multiplexability
- SlimFit family feeling
- Embedded LINEON



BACK TO SUMMARY

COSTAN



This information is confidential and was prepared by Epta solely for our internal use. It is not to be relied on by any third party without Epta prior written consent. Marketing 09/2020

Best in Class Cabinets



STRENGTHEN THE FROZEN FOOD OFFER WITH AN UPGRADED FLEXIBILITY.



Best in class for energy class

- **CLASS B** specific configuration: -40% as energy saving vs previous model
- Advance passive doors, Value LEDs, panoramic ends and variable speed compressor, 2D or 3D

Range Flexibility and Modularity for Proxy and Super stores.

- Comprising Compact / Narrow models
- Including 2D, 3D lengths
- Multiplexability and single-injected case
- SlimFit family feeling
- Embedded LINEON



Best in Class Cabinets



This information is confidential and was prepared by Epta solely for our internal use. It is not to be relied on by any third party without Epta prior written consent. Marketing 09/2020



BACK TO SUMMARY



STRENGTHEN THE FROZEN FOOD OFFER WITH AN UPGRADED FLEXIBILITY

- Best Energy Class « B » with **26%** energy saving compared to previous version
- New Insulation, sealed doors, super evaporator, adjustable fan speed setting
- Best flexible solutions for all types of store
- Homogeneous aesthetics with Granfit/Skyview family



Features:

- Closed cabinet
- Cabinet one Height H20 (2110)
- Same external dimensions
- Available in Narrow / Modular (P6),
- Length: 125 multiplexible 125/250/375
- Temperature class : Classe 3M1



This information is confidential and was prepared by Epta solely for our internal use. It is not to be relied on by any third party without Epta prior written consent. Marketing 09/2020

Best in Class Cabinets



	Performance	Multiplexable	EOL	Length				Basement		
				125	188	250	375	P5	P6	P8
GranVista Ultra	3M1	YES	NO	●	NO	●	●	NO	●	NO

FIRST IN CLASS FOR CONVENIENCE AND HARD DISCOUNT

Best Energy Class « B » with **26%** energy saving compared to previous version

- Best flexible solutions for Convenience and Hard discount store.
- R290A refrigeration circuit F-Gas compliant and environmentally friendly solution
- Height H20 (2110) with smaller internal facing (1685 mm vs the 1715mm)
- Same external dimensions
- SCU in the base for easy service access



Features:

- System in the low part
- Available in Air: Compact, Narrow and Large
- Available in Waterloop: Narrow/
- Length: 125 multiplexible /250/375 and EOL
- New Height of facing
- Natural gas R290
- Temperature class: Classe 3M1
- Closed cabinet

	Performance	Multiplexable	Length				Basement		
			125	188	250	375	C	N	L
GranVista Integral Air	3M1	YES	●	P6	●	●	●	●	●
GranVista Integral Water	3M1	YES	●	NO	●	●	NO	●	No



This information is confidential and was prepared by Epta solely for our internal use. It is not to be relied on by any third party without Epta prior written consent. Marketing 09/2020

Best in Class Cabinets



BEST IN CLASS IN THE FROZEN FOOD AREA

- Best Energy Class « B » with **35%** energy saving compared to previous version in the 4 doors version
- **3L1** performance class according to EN ISO 23953-2.
- **R290** refrigeration circuit F-Gas compliant and environmentally friendly
- **High efficiency** self-contained unit with new generation inverter compressors.
- **Door frame energy free:** heater replaced by a hot pipe using the unit heat. Benefits: energy-saving and reduced heat rejected into the store.
- **Defrost:** new Epta Hybrid defrost management with self-evaporating tray.
- **Passive doors** (low consumptions).
- LED lighting **Advance 4000K** on mullions.
- **2 Panoramic endwalls.**
- **Controllers** Dixell XWi70K, Carel IJFood.
- **Power supply** 230V/1ph/50hz or 400V/3ph/50Hz.



	Performance	Multiplexable	Length (mm)					Frequency 50Hz	Integral
			2d(1565)	3D(2343)	4D(3124)	5D(3905)	3DS EOL (2025)		
Compact	3L1	●	●	●				●	PROPANE
Narrow	3I1	●	●	●	●	●	●	●	R290



BACK TO SUMMARY



This information is confidential and was prepared by Epta solely for our internal use. It is not to be relied on by any third party without Epta prior written consent. Marketing 09/2020

Best in Class Cabinets



COSTAN 

www.costan.com



COSTAN 



Epta S.p.A. participates in the ECC programme for:
Refrigerated display cabinets (RDC); Check ongoing validity
of certificate online: www.eurovent-certification.com