



COSTAN 

Batik Integral

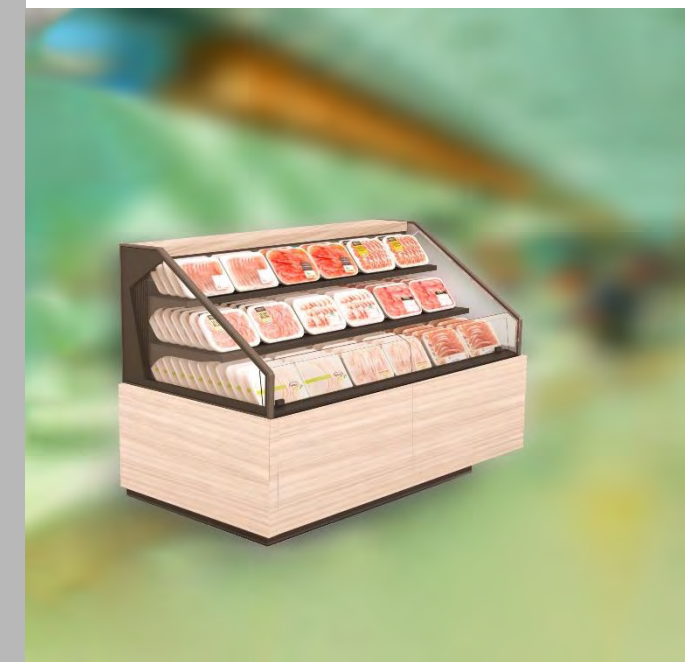
PRODUCT OVERVIEW



The
classy
solution for
placing
anywhere in
a store



COSTAN 



Batik
Integral
PRODUCT OVERVIEW

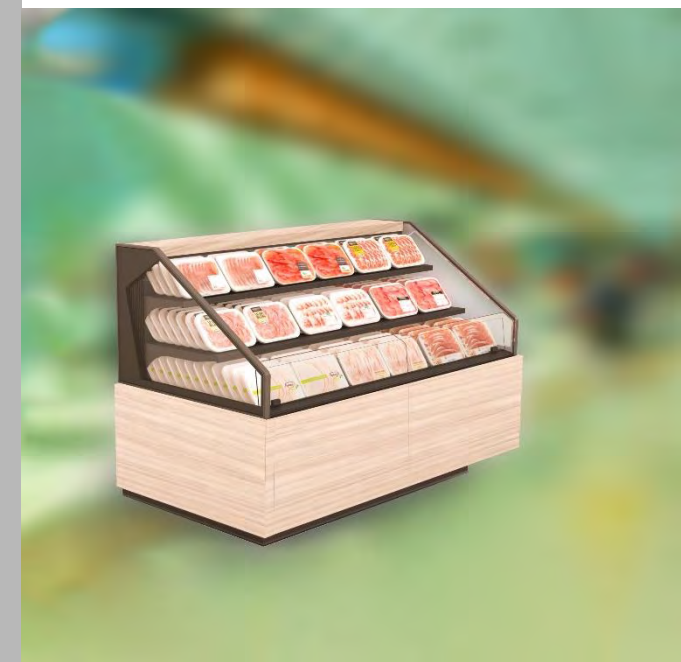

Epta

Overview | Product at a glance

The solution suitable for any store position



COSTAN 



Batik
Integral
PRODUCT OVERVIEW


Epta

Overview

Highlights

The Integral High Front Semivertical, ideal for fresh food

Looks like a remote

A true member
of the Outfit family

Can be placed
anywhere



COSTAN 



Batik
Integral
PRODUCT OVERVIEW


Epta

Overview

Product range

Batik Integral cabinets are available in:

1 Height

- H12

2 Widths

- Compact (C)
- Narrow (N)

3 Lengths

- 125
- 188
- 250 linears

2 Aesthetics

- Design
- Studio

Temperature class

- 3H
- 3M2

LED lighting

- Shelves
- Plinth

Fluid

- R290

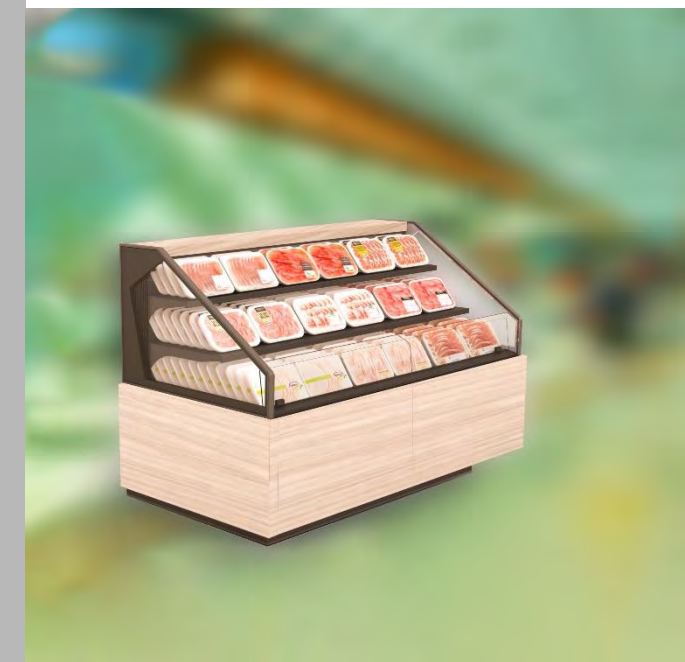
Ticket holder position

- Shelves
- Front

Ticket holder type

- Universal rail
- Paper (25, 30, 40, 52mm)
- Electronic

COSTAN 



Batik
Integral
PRODUCT OVERVIEW


Epta

Availability H1200 Integral

 First order loading
Week 42/2020

 First delivery
Week 47/2020



Batik
Integral
PRODUCT OVERVIEW



COSTAN 

www.costan.com



COSTAN 



Epta S.p.A. participates in the ECC programme for:
Refrigerated display cabinets (RDC); Check ongoing validity
of certificate online: www.eurovent-certification.com

