

WARNING / ATTENZIONE:
 Angle valves WITHOUT schrader
 Rubinetti ad angolo SENZA schrader

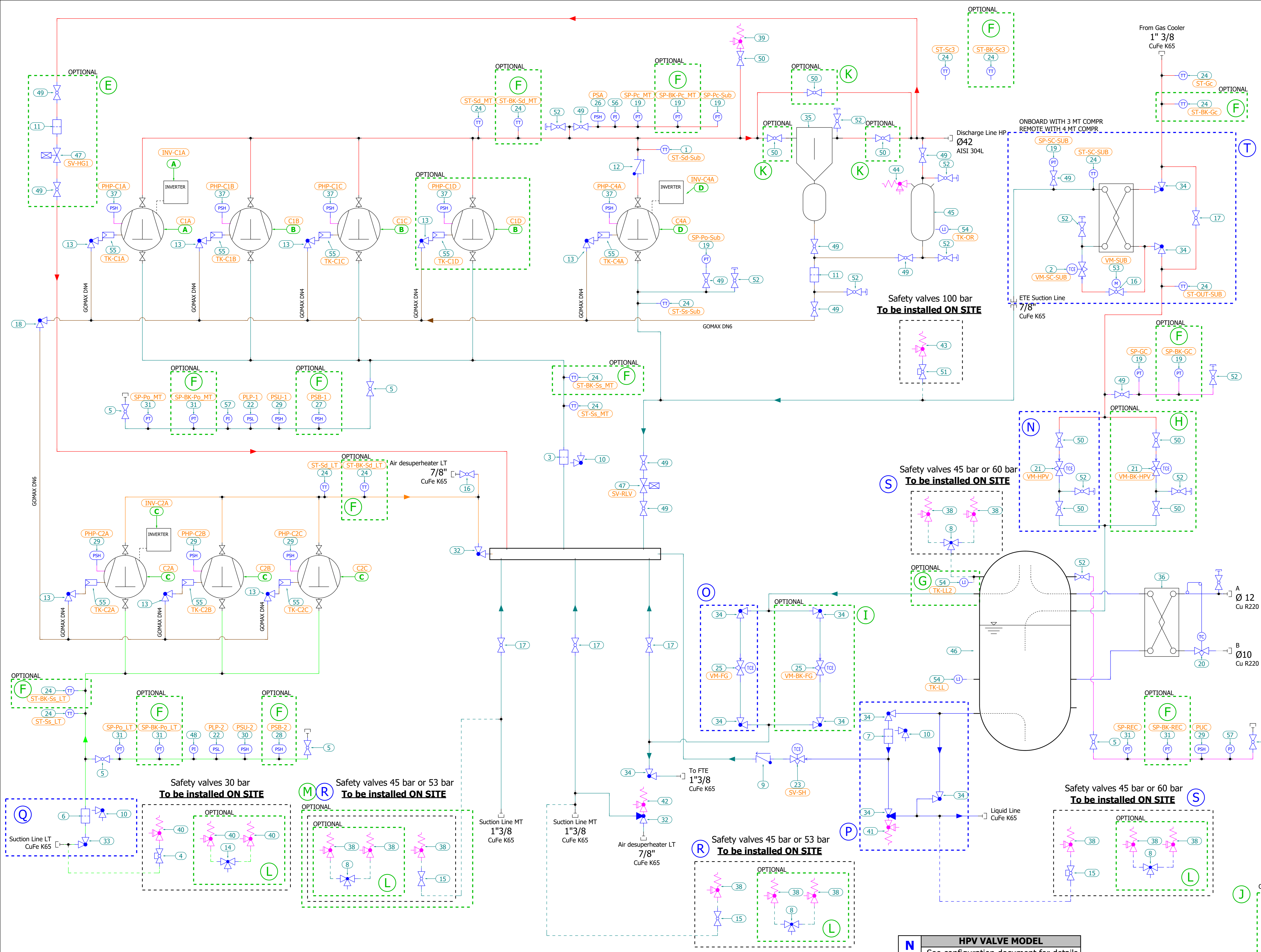
ANGLE VALVE POSITION

During the operation of the pack,
 angle valves with safety device must be
 completely open.

Durante il funzionamento della centrale
 i rubinetti ad angolo con valvola di sicurezza
 devono essere completamente aperti.

BILL OF MATERIALS

LABEL NUM.	DESCRIPTION
1	Temperature Transducer
2	Expansion Valve
3	Filter
4	Ball Shut-Off Valve For Safety Valve
5	Shut Off Valve
6	Filter
7	Filter
8	Changeover Devices For Safety Valve
9	Check Valve
10	Angle Valve
11	Filter
12	Check Valve
13	Angle Valve
14	Changeover Devices For Safety Valve
15	Ball Shut-Off Valve For Safety Valve
16	Shut Off Valve
17	Shut Off Valve
18	Angle Valve
19	Pressure Transducer
20	Thermostatic Valve
21	Expansion Valve
22	Pressure Switch
23	Expansion Valve
24	Temperature Transducer
25	Expansion Valve
26	Pressure Switch
27	Pressure Switch
28	Pressure Switch
29	Pressure Switch
30	Pressure Switch
31	Pressure Transducer
32	Angle Valve
33	Angle Valve
34	Angle Valve
35	Oil Separator
36	Exchanger
37	Pressure Switch
38	Safety Valve
39	Safety Valve
40	Safety Valve
41	Safety Valve
42	Safety Valve
43	Safety Valve
44	Safety Valve
45	Oil Reserve
46	Liquid Receiver 200 lt
47	Solenoid
48	Gauge
49	Shut Off Valve
50	Shut Off Valve
51	Shut Off Valve
52	Shut Off Valve
53	Motor For Valve
54	Level Sensor
55	Oil Regulator
57	Gauge
56	Gauge



MT COMPRESSOR MODEL	DANFOSS INVERTER MODEL (IP20)
COMPR. 4JTE-10K-40P	FC103 134F7676 24A/11kW/400V
COMPR. 4HTE-15K-40P	FC103 134F7489 32A/15kW/400V
COMPR. 4GTE-20K-40P	FC103 134F7678 44A/22kW/400V
COMPR. 4FTE-20K-40P	FC103 134F7679 61A/30kW/400V
COMPR. 4DTE-25K-40P	FC103 134F7680 73A/37kW/400V
COMPR. 4CTE-30K-40P	

MT COMPRESSOR MODEL	DANFOSS INVERTER MODEL (IP20)
COMPR. 4JTE-10K-40P (2-3X)	
COMPR. 4HTE-15K-40P (2-3X)	
COMPR. 4GTE-20K-40P (2-3X)	
COMPR. 4FTE-20K-40P (2-3X)	
COMPR. 4DTE-25K-40P (2-3X)	
COMPR. 4CTE-30K-40P (2-3X)	

LT COMPRESSOR MODEL	DANFOSS INVERTER MODEL (IP20)
COMPR. 2JSL-2K 40S (3X)	FC103 134F7669 7,2A/3KW/400V
COMPR. 2HSL-3K 40S (3X)	FC103 134F7670 10A/4KW/400V
COMPR. 2GSL-3K 40S (3X)	FC103 134F7665 13A/5,5KW/400V
COMPR. 2FSL-4K 40S (3X)	FC103 134F7663 16A/7,5KW/400V
COMPR. 2ESL-4K 40S (3X)	FC103 134F7662 24A/11KW/400V
COMPR. 2DSL-5K 40S (3X)	
COMPR. 2CSL-6K 40S (3X)	

ETE COMPRESSOR MODEL	DANFOSS INVERTER MODEL (IP20)
COMPR. 4PTE-7K-40S	FC103 134F7676 24A/11KW/400V
COMPR. 4MTE-10K-40S	FC103 134F7489 32A/15kW/400V
COMPR. 4KTE-12K-40S	FC103 134F7489 32A/15kW/400V
COMPR. 4HTE-20K-40S	FC103 134F7678 44A/22kW/400V

OPTIONS	DESCRIPTION
E	HOT GAS BYPASS
F	BACKUP CONTROL
G	LIQUID LEVEL ALARM
H	BACKUP HPV VALVE
I	BACKUP FLASH GAS VALVE
J	BACKUP CONDENSING UNIT R134a
K	OIL SEPARATOR BYPASS
L	CHANGEOVER VALVE
M	SECOND SUCTION MT SAFETY VALVE

N	HPV VALVE MODEL	See configuration document for details
O	FLASH GAS VALVE MODEL	See configuration document for details
P	LIQUID LINE	See configuration document for details
Q	SUCTION LINE LT	See configuration document for details
R	SUCTION MT SAFETY VALVE	See configuration document for details
S	LIQUID LINE SAFETY VALVE	See configuration document for details
T	ETE HEAT EXCHANGER	See configuration document for details

DANFOSS CONTROLLER

When both depicted, changeover safety valves available as an option in replacement of single safety valve
 LIQUID LINE, either 45BAR or 60BAR
 MT SUCTION LINE, either 45BAR or 53BAR

--- - - - - (C) ADDITIONAL DETAILS ON CONFIGURATION DOCUMENT

--- - - - - (F) OPTION

